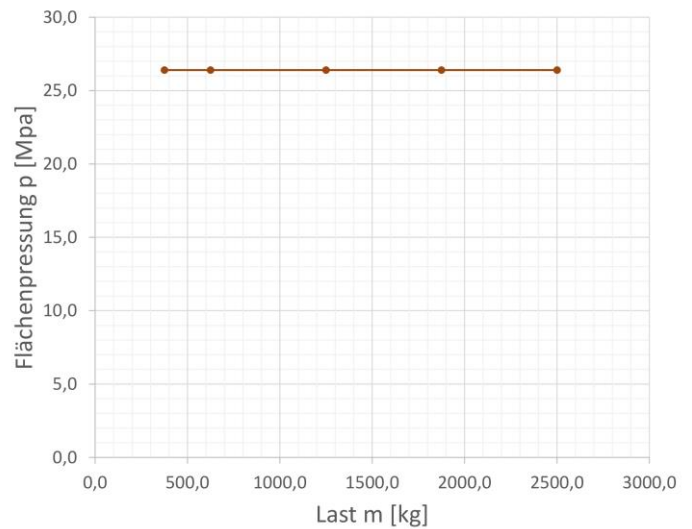
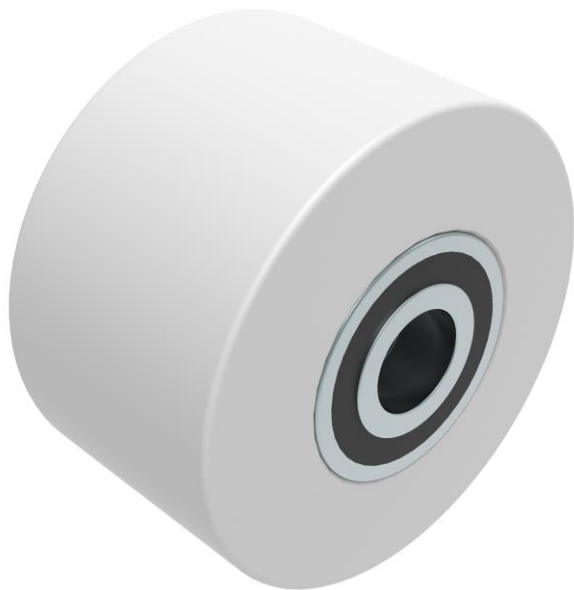


# Fact sheet **ECO-Skate** NY-wheel

## NY Ø140x86xØ30

# HTS



### Specification:

- Low rolling resistance
- Extremely durable and low wear. Risk of breakage when subjected to impact loads with high weights
- Corrosion resistant (depending on installed deep groove ball bearing)
- Temperature resistance -30 to 80°C
- Hygienic
- Trackless / abrasion resistant
- Contact discoloration free
- Very good resistance to many acids, alkalis, oils and greases
- For use on hard and smooth floors. Floor must be clean

### Technical data:

# 11 140 10 25	12,0 x 79 = 948 mm <sup>2</sup> ▼ 26,4 MPa	MAT NY, 80 Shore D
2500 daN	Ø140x85 - Ø30 mm	2,00 kg
62,5 dN	50,0 dN	V <sub>max</sub> = 2 km/h

**Please always observe the operating instructions, their safety instructions and local conditions!**

# Part No.	Area mm <sup>2</sup> of the roller surface pressure ▼ N / mm <sup>2</sup>	MAT Wheel material layer, core: AL Aluminium, NY Nylon PU Polyurethane, ST Steel	Carrying Capacity of load moving skate in daN at 2km/h max.	* Varies depending on the tolerances of the floor and ambient situation. All information without guarantee.
Dimensions of wheel, inside ball bearing diameter mm	Weight kg	Starting resistance* in daN, required force to start moving, under ideal conditions	Traction* in daN, required force to move the load at a steady speed of 2 km/h under ideal conditions	