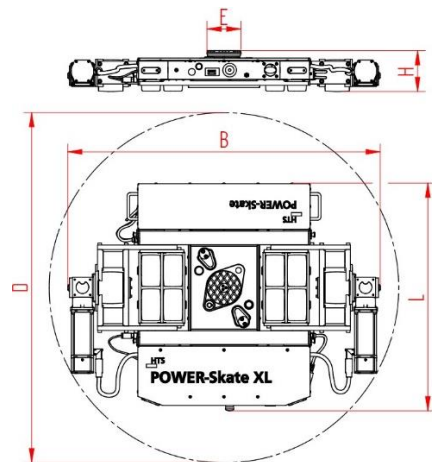


POWER-Skate® XL PSX 20-40H

Load Moving Skate, radio-controlled, 3-point support, with lifting cylinder

HTS



Description:

Battery-operated, radio remote-controlled heavy-duty load moving skate with integrated lifting cylinder for professional, in-house transport of heavy goods on clean and even floor. With only one single-joystick remote control every travel movement is proportionally and exactly executed. Equipped with LiFePo4 battery, radio control, chargers, turn table with an anti-slip pad, high-quality HTS nylon load wheels and polyurethane traction wheels. They are abrasion-resistant, non-marking and cut-resistant as well as suitable for all smooth floors. Combined with a rear S-skate or two bolted ROTOflex skates of the same height or slightly higher installation height these skates form a safe overall 3-point load moving system. The capacity of the skates has to correspond to the load of the POWER-Skates.

Technical data skate:

# 10.204.55.50	L x B x H 1003 x 1379 x 180mm	Ø E Ø150 mm
268 kg	20000 daN	40000 daN
D 1545 mm	4 h / 4,5 h	2,4 GHz
0,5 V _{max} = 0,5 km/h	μ _Q ≥ 0,3	according to DIN 18202 table 3, line 3

Technical data load wheel:

# 11.140.10.25R	140 x 86 – Ø30 mm
# 8	12,0 x 45 = 540 mm ² ▼ 46,3 MPa
MAT NY	43,2 cm ²



Observe operating instruction, their safety instructions and local conditions!

# part no.	dimensions [mm] L x B x H	weight [kg]	capacity of skate [daN]	maximum tensile load [daN] with 2 additional support points
Ø dimensions of loaded area [mm]	turning circle D [mm] single skate	stroke [mm]	Running time under full load / charge time [h] with HTS- charger. Fast charger on request.	radio frequency (others on request)
# number of wheels	dimensions of wheel, diameter of ball bearing [mm]	area of wheel [mm ²] surface pressure ▼ [N/mm ²]	loaded area per skate [cm ²]	MAT wheel material layer, core: AL aluminium, NY nylon, PU polyurethane, ST steel
0,5 maximum speed [km/h]	required friction coefficient drive wheel / floor	floor conditions		

* Not included in delivery.

POWER-Skate® XL PSX 20-40H

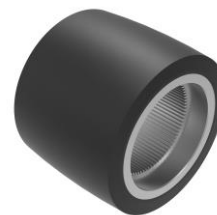
Load Moving Skate, radio-controlled, 3-point support, with lifting cylinder

HTS



Technical data traction wheel:

#	93.000.11.00		140 x 109 mm
	# 2		19 x 100 = 1900 mm² ▼ 10,5 MPa
MAT	PU 85 Shore A, ST		38 cm²



Possible combination:

1	PSX 20-40H (10.204.55.50) 	XN20S-B * (10.200.55.20)
	PSX 20-40H (10.204.55.50) 	XN20S-B-190 * (10.200.55.21)

Technical data lifting cylinder:

		 50 mm
--	--	------------------

Accessories:

#	100.008.119 *		L x B x H 170 x 170 x 190 mm
	11,2 kg		20000 daN
	Bodenbeschaffenheit: nach DIN 18202 Tabelle 3, Zeile 3		



Observe operating instruction, their safety instructions and local conditions!

#	part no.		dimensions [mm] L x B x H		weight [kg]		capacity of skate [daN]		maximum tensile load [daN] with 2 additional support points
	dimensions of loaded area [mm]		turning circle D [mm] single skate		stroke [mm]		Running time under full load / charge time [h] with HTS- charger. Fast charger on request.		radio frequency (others on request)
	#		dimensions of wheel, diameter of ball bearing [mm]		area of wheel [mm²] surface pressure ▼ [N/mm²]		loaded area per skate [cm²]	MAT	wheel material layer, core: AL aluminium, NY nylon, PU polyurethane, ST steel
	0,5		required friction coefficient drive wheel / floor		floor conditions				

* Not included in delivery.